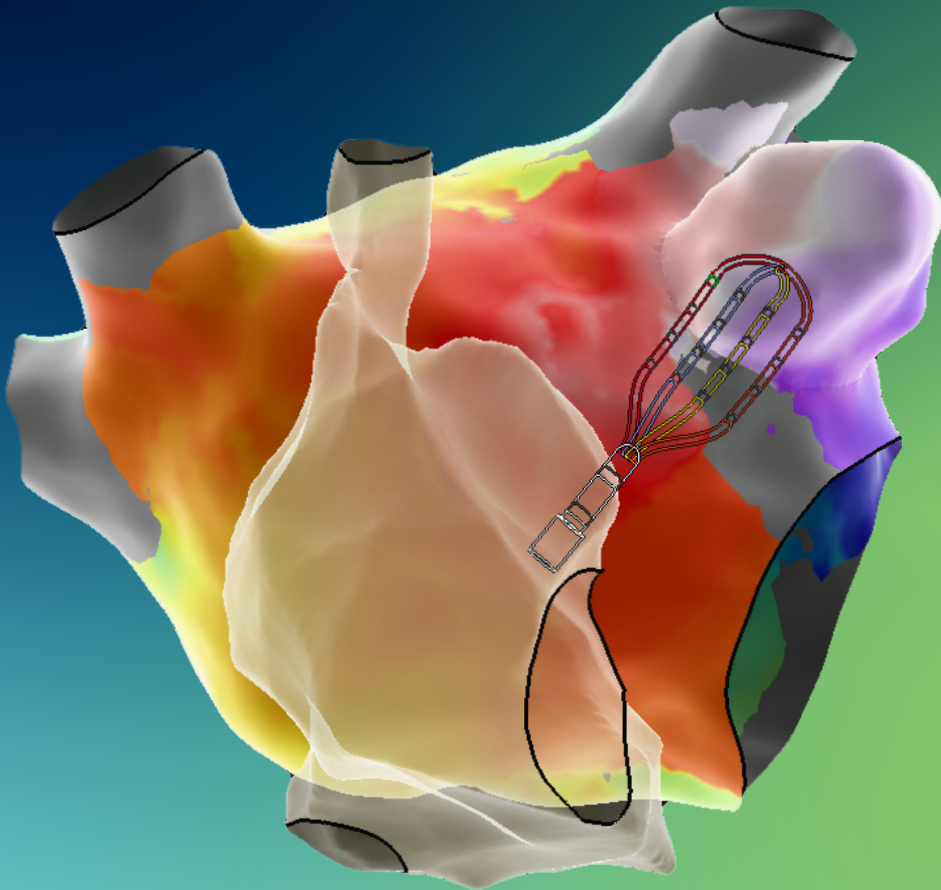


**Abbott**

# MAPPING WITHOUT COMPROMISE

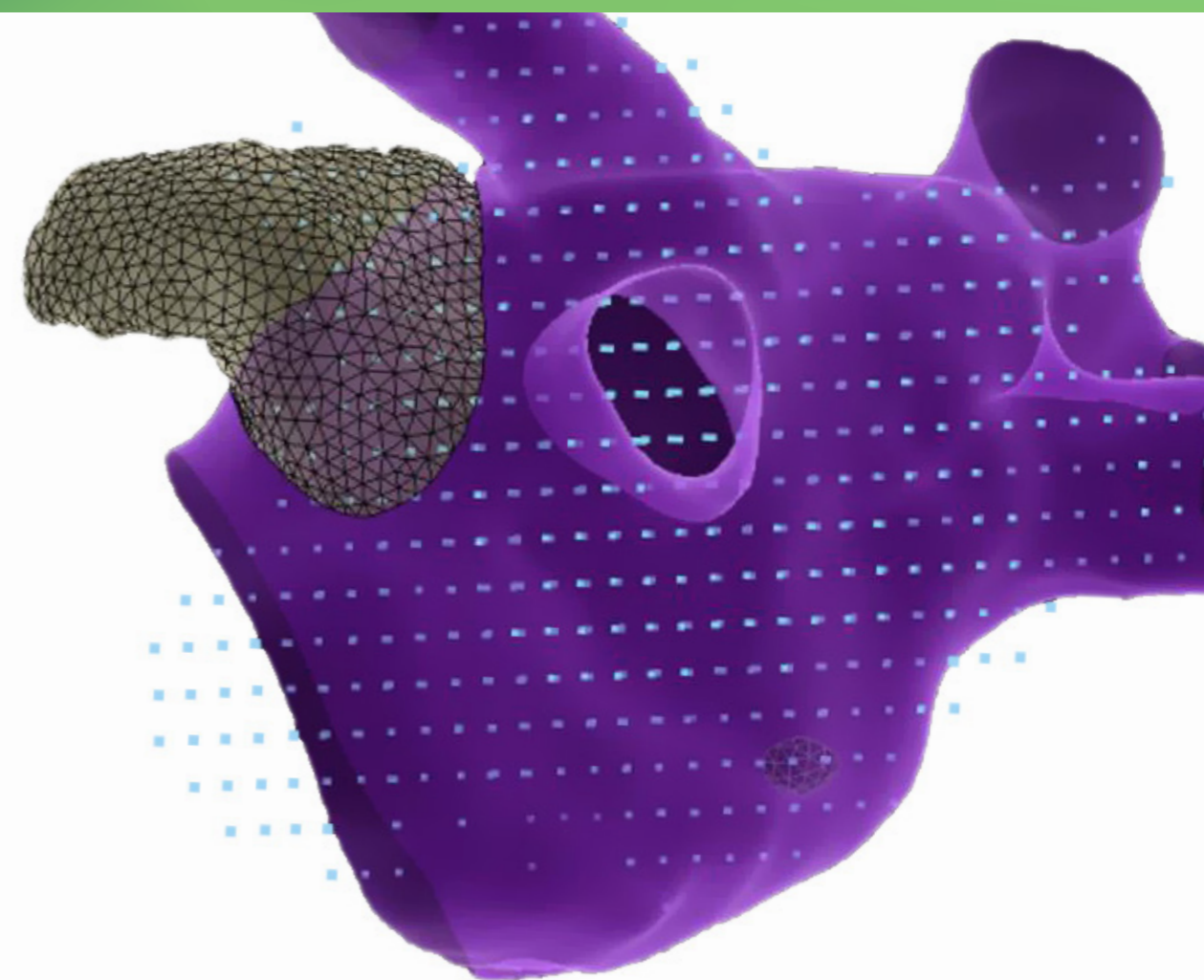
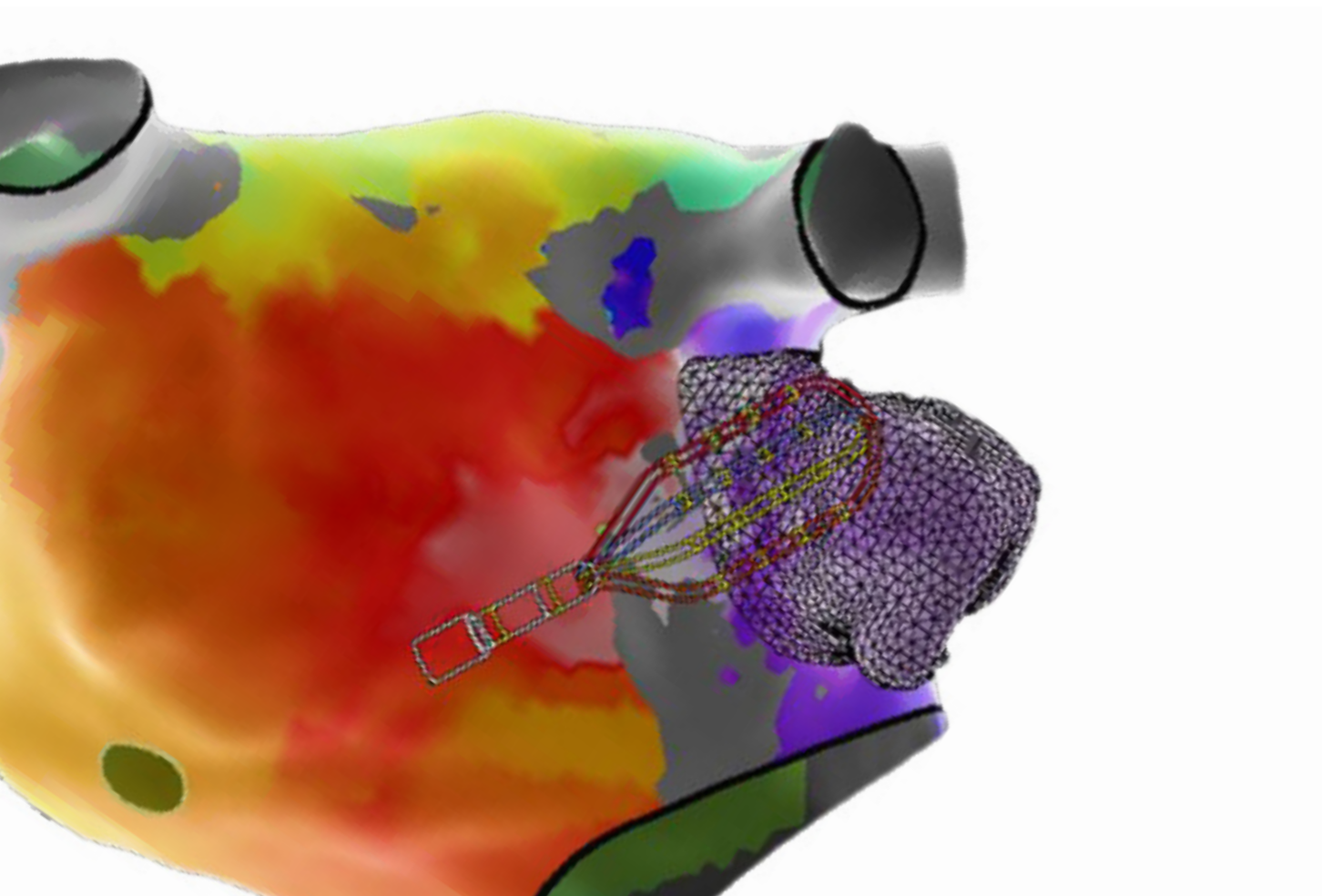
ENSITE™ X EP SYSTEM



# MAPPING WITHOUT COMPROMISE

POWERFUL. RELIABLE. EFFICIENT.

Designed with input from physicians worldwide, the EnSite™ X EP System is a next-generation 3D mapping platform created to give you a powerful, reliable and efficient user experience for every procedure.



## MAP ANY ARRHYTHMIA WITHOUT COMPROMISE

### TAKE HIGH DENSITY MAPPING TO THE NEXT LEVEL

Unleash the **POWER** of the Advisor™ HD Grid Mapping Catheter, Sensor Enabled™ to address bipolar blindness to capture signals that other technologies miss<sup>1-3</sup>

Experience **RELIABLE** stability in all procedures with EnSite™ VoXel Mode's trusted model and location accuracy over time

Ease system setup and improve operator **EFFICIENCY**<sup>4</sup> with a completely redesigned platform



# POWERFUL

## Ultra high density mapping<sup>5</sup>

SEE THINGS DIFFERENTLY WITH THE ADVISOR HD GRID MAPPING CATHETER, SE

### WHAT IS BIPOLAR BLINDNESS?

Bipolar blindness refers to the directional limitations of a bipolar recording - HD Wave Solution™ Technology addresses this.

### ADDRESS BIPOLAR BLINDNESS

with the Advisor HD Grid Mapping Catheter, SE and HD Wave Solution™ Technology, capturing signals missed by other technologies<sup>1-3</sup>

### EXPERIENCE 10X FASTER MAPPING AND DATA COLLECTION

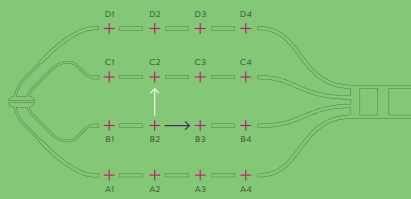
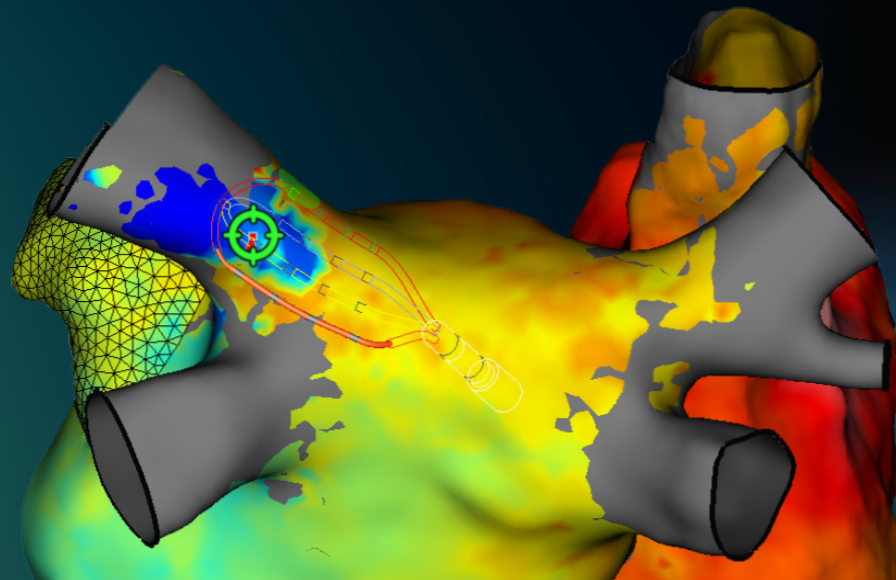
when used in conjunction with the AutoMap Module and TurboMap features<sup>6</sup>

### REDEFINE SIGNAL QUALITY

with a newly designed platform paired with a best-in-class high density mapping catheter that improves the signal to noise ratio with a noise floor of 0.01 mv<sup>7</sup>

### MAP 1,000,000 POINTS

to meet your procedural needs without limitation



HD Grid B2-C2 (66) (1.496:0.00)

HD Grid B2-B3 (66) (0.416:0.00)

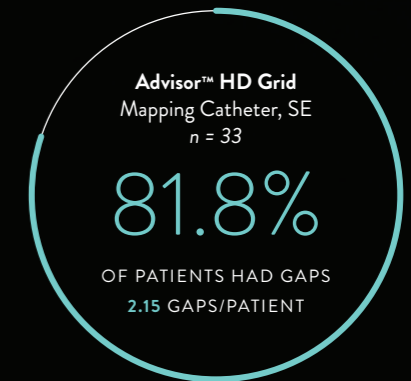
# UNLEASH THE POWER OF THE ADVISOR HD GRID MAPPING CATHETER, SENSOR ENABLED

WHEN YOU CHECK FOR GAPS IN PULMONARY VEIN ISOLATION, ARE YOU SEEING THEM ALL?

### INDIRECT COMPARISON: CIRCULAR MAPPING CATHETERS AND ADVISOR HD GRID MAPPING CATHETER, SE<sup>1\*</sup>

CMC10 n = 30		CMC20 n = 36	
36.7%	0.9	38.9%	1.44
OF PATIENTS HAD GAPS	GAPS/PATIENT	OF PATIENTS HAD GAPS	GAPS/PATIENT

ISOLATION WAS TRACKED ACROSS 99 CASES

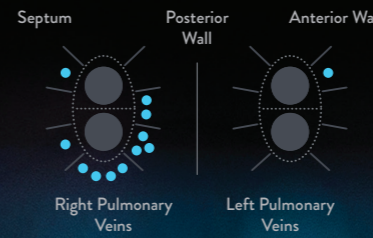


### DIRECT COMPARISON: CRYOABLATION AND ADVISOR HD GRID MAPPING CATHETER, SE<sup>2\*\*</sup>

4 patients with ≥ 1 gap missed by the Achieve<sup>†</sup> Mapping Catheter



12 total gaps missed by the Achieve Mapping Catheter were identified by the Advisor HD Grid Mapping Catheter, SE

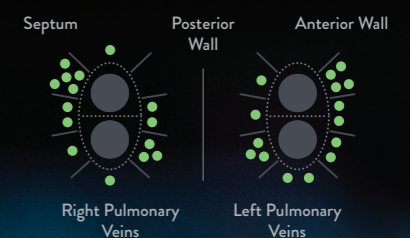


### DIRECT COMPARISON: PACING ABLATION LINES AND ADVISOR HD GRID MAPPING CATHETER, SE<sup>3\*\*\*</sup>

15 patients with ≥ 1 gap missed by pacing



30 total gaps missed by pacing were identified by the Advisor HD Grid Mapping Catheter, SE



\* The incidence and location of gaps following PVI were tracked utilizing either a 10-pole circular mapping catheter (CMC10), a 20-pole circular mapping catheter (CMC20) or the Advisor™ HD Grid Mapping Catheter, SE.

\*\* In a direct comparison, 18 patients received cryoablation with isolation confirmed by the Achieve<sup>†</sup> Mapping Catheter. Isolation was then checked again with the Advisor HD Grid Mapping Catheter, SE.

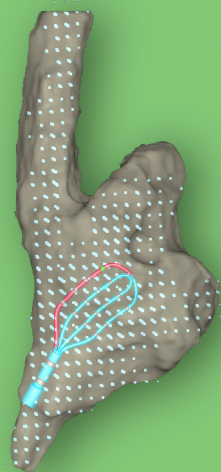
\*\*\* In a direct comparison, 22 patients received ablation with isolation confirmed by pacing the ablation line. Isolation was then checked again with the Advisor HD Grid Mapping Catheter, SE.



# RELIABLE

Advanced stability for complex, longer procedures

TRUST MODEL AND LOCATION  
ACCURACY OVER TIME



## INTRODUCING ENSITE™ VOXEL MODE

### WHAT IS A VOXEL?

In computer graphics, a voxel is a three-dimensional (3D) point in space.

### WHAT IS ENSITE VOXEL MODE?

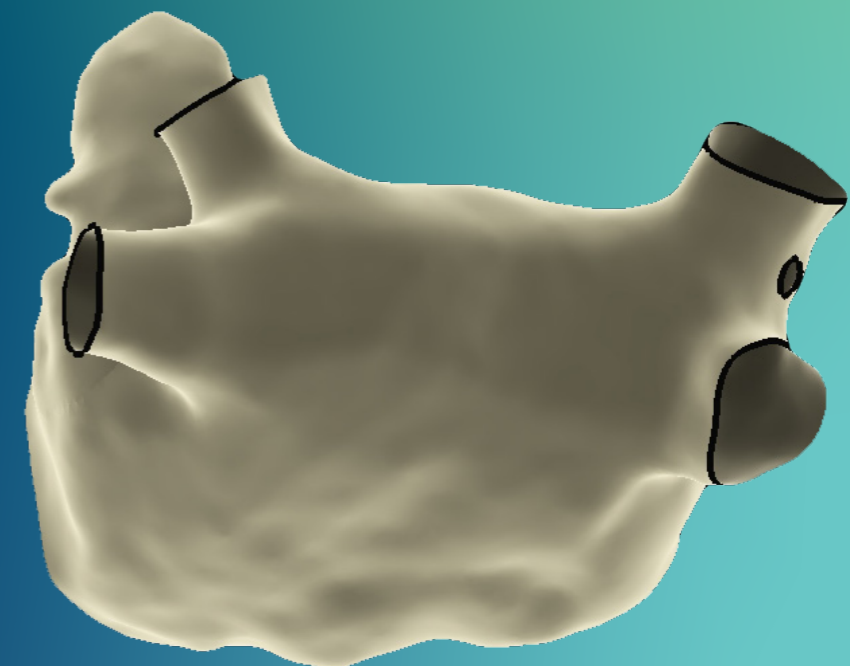
EnSite VoXel Mode allows user to collect modeling data using magnetic-based coordinates to provide accurate and linear visualization.

**OVERCOME STABILITY CHALLENGES** with changes in patient management and EP lab environment variables, using the **EnSite™ VoXel Mode**.

- **IMPROVE STABILITY AND CAPTURE DATA FASTER<sup>4</sup>** with the new RespCompX algorithm by collecting points throughout the entire respiratory cycle without respiration gating limitations.
- **MINIMIZE CASE DISRUPTION** due to patient movement, even after cardioversion
- **ACCURATELY COLLECT DATA** throughout the procedure by reducing the impact of environmental changes caused by metal distortion



CT IMAGE



MODEL ACCURACY WITH  
ENSITE VOXEL MODE

# EFFICIENT

Simple, consistent user experience

EASE SYSTEM SETUP WITH SIMPLIFIED CONNECTOLOGY AND A COMPLETELY REDESIGNED PLATFORM

50%

**REDUCE THE NUMBER OF CONNECTIONS BY UP TO 50%†** to facilitate a faster, easier system setup

94%

**94%** of operators saw **IMPROVED SYSTEM USABILITY** with an optimized software user interface<sup>8</sup>

93%

**93%** of users agreed the new system setup allows for **FASTER TROUBLESHOOTING** and **MINIMIZED DOWNTIME<sup>8</sup>**



## A SYSTEM BUILT TO LAST

- ✓ Next generation platform with annual software release cadence
- ✓ Enhanced cybersecurity capabilities including access restrictions, white listing and strengthened patient data protection

## CONTINUAL, CONVENIENT PRODUCT COVERAGE††

	1-, 2- or 3-year Terms	1-, 2- or 3-year Terms	1-, 2- or 3-year Terms	3-year Term Only
Entitlement	Basic Assurance™	Assurance™ Plus	Assurance™ Premium	Endurance™ Plus
Technology Performance Package				✓
Standard Software Upgrades (e.g., v.1.0 to v.2.0)		✓	✓	✓
Preventive Maintenance (one visit/year)		✓	✓	✓
On-site Service and Repair if necessary	72-hour Response	48-hour Response	48-hour Response	24-hour Response
Telephone Technical Support	✓	✓	✓	✓
Expansion Modules†††			✓	
Hardware Upgrades and Revisions†††			✓	
Next Generation Hardware Iterations†††			✓	

† Reduction of connections from the patient connecting to the amplifier from 55 (EnSite™ Precision System) to 25 (EnSite™ X System) for an AF case.

†† Chart does not show all service entitlements. Subject to country availability. Please consult with your local Abbott representative for specific plan terms and conditions.

††† Released during the term of service coverage.





# A COMPLETE ECOSYSTEM

for all of your EP procedures

ACCESS    RECORDING    TRANSSEPTAL    MAPPING    ABLATION    LAAO    VASCULAR CLOSURE    MONITORING



Agilis™ NXT  
Introducer



WorkMate Claris™  
Recording System



ViewMate™ Ultrasound  
Console



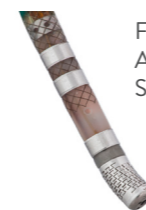
BRK™ Transseptal  
Needle



Advisor™ HD Grid  
Mapping Catheter,  
Sensor Enabled™



Ensight™ X EP System



FlexAbility™ Irrigated  
Ablation Catheter,  
Sensor Enabled™



TactiCath™ Contact  
Force Ablation Catheter,  
Sensor Enabled™



Amplatzer Amulet  
LAA Occluder



Perclose ProGlide™  
Vascular Closure System



Confirm Rx™ ICM





The EnSite X EP System truly allows you to map without compromise, with reliable stability beyond my expectations. Abbott has the unique, powerful combination of a new system with added magnetic navigation, the unmatched high density mapping capabilities of the Advisor HD Grid Mapping Catheter, SE and mapping software that you won't find anywhere else. You don't need any other mapping system to meet your needs.

Prof. Isabel Deisenhofer  
German Heart Center | Munich, Germany



Learn more at [cardiovascular.abbott/ous/ensitex](https://cardiovascular.abbott/ous/ensitex) or contact your representative today.

1. Porterfield C, et al. Comparison of Gap Identification Using Three Technologies for Confirmation of Pulmonary Vein Isolation. Originally scheduled for poster presentation at EHRA 2020 Congress. Abbott. Data on File: MAT-2002108 v1.0.
2. Eldadah Z, et al. Incidence and Location of PVI Gaps Identified Post-Cryoballoon Ablation for Atrial Fibrillation. Originally scheduled for poster presentation at EHRA 2020 Congress. Abbott. Data on File: MAT-2002103 v1.0.
3. Giuggia M, et al. Incidence and Location of Residual Gaps Identified by a High-Density Grid-Style Mapping Catheter After PVI Is Confirmed by Pacing the Ablation Lines. Originally scheduled for poster presentation at EHRA 2020 Congress. Abbott. Data on File: MAT-2002112 v1.0.
4. Abbott. Data on File. Claims Matrix Document #90467739.
5. Jiang R, Beaser AD, Aziz Z, Upadhyay GA, Nayak HM and Tung R. High-Density Grid Catheter for Detailed Mapping of Sinus Rhythm and Scar-Related Ventricular Tachycardia-Comparison With a Linear Duodecapolar Catheter. JACC: Clinical Electrophysiology. 2020:1055.
6. Abbott. Data on File. Document #90299533.
7. Abbott. Data on File. Document #90569806.
8. Abbott. Data on File. Document #90471779.

**CAUTION:** This product is intended for use by or under the direction of a physician. Prior to use, reference the Instructions for Use, inside the product carton (when available) or at [manuals.sjm.com](https://manuals.sjm.com) or [eifu.abbottvascular.com](https://eifu.abbottvascular.com) for more detailed information on Indications, Contraindications, Warnings, Precautions and Adverse Events.

**Abbott**  
One St. Jude Medical Dr., St. Paul, MN 55117 USA, Tel: 1 651 756 2000  
[Abbott.com](https://Abbott.com)

<sup>™</sup> Indicates a trademark of the Abbott group of companies.  
© 2020 Abbott. All Rights Reserved.  
MAT-2007265 v1.0 | Item approved for use outside of the United States only.

