

CAN I HIT THE ROAD
AT A MOMENT'S NOTICE
ON WARFARIN?

You Can.



About Acelis Connected Health Services

As a remote INR monitoring leader, Acelis Connected Health Services has helped track more than 46 million INR tests. We also are a leading provider of programs for patients with chronic conditions including atrial fibrillation, deep vein thrombosis, and heart failure. As a Medicare-enrolled Independent Diagnostic Testing Facility (IDTF), we have earned the Joint Commission's Gold Seal of Approval® accreditation.



1: At-Home Versus In-Clinic INR Monitoring: A Cost-Utility Analysis from The Home INR Study (THINRS). Phibbs CS1,2,3, Love SR4,5, Jacobson AK6,7, Edson R8, Su P9, Uyeda L8, Matchar DB4,10,11.

2: Internal Acelis Connected Health data on file

3: CHEST 2005; 127:1515-1522

4: The importance of mean time in therapeutic range for complication rates in warfarin therapy of patients with atrial fibrillation: A systematic review and meta-regression analysis. Anne Sig Vestergaard, Flemming Skjøth, Torben Bjerregaard Larsen, Lars Holger Ehlers. 2017 PLoS ONE 12(11):e0188482.

5: Van Beek, A., Moeyaert, M., Ragheb, B., et al. Outcomes of Warfarin Home INR Monitoring vs. Office-Based Monitoring: a Retrospective, Claims-Based Analysis. J GEN INTERN MED (2023). <https://doi.org/10.1007/s11606-023-08348-4>.

†Limitations of the analysis: • Only 5 trials were considered high quality (per the analysis). • Only 2 of the 22 reviewed trials in the analysis were conducted in the United States (ref# 23, 24), and both investigated PST, not PSM. • Compared with Usual Care, PST with or without PSM is associated with significantly fewer deaths and thromboembolic events, without increased risk for a serious bleeding event, for a highly selected group of motivated adult patients requiring long-term anticoagulation with vitamin K antagonists. • PST is not for every patient taking warfarin but rather only selected patients who are willing, able and reliable to do so.

© 2024 Acelis Connected Health. All rights reserved. All trademarks referenced are trademarks of their respective owners. All photos displayed are for illustrative purposes only. Any person depicted in such photos is a model.

MAT-2413989 v1.0 | Item approved for U.S. use only. 12/24

“Having the meter gives you freedom you didn't realize you had before. Being a part of the remote INR monitoring program gives me peace of mind and a sense of security about knowing what my levels are.”

ACTUAL PATIENT



Acelis Connected Health Customer Information Form

Customer Information

First Name, M.I., Last Name

Date of Birth

Gender

Female

Male

Mailing Address

City

State

Zip

Primary Phone Number

Alternate Phone Number

Email

Physician Name

Physician Phone

Please complete the following to allow an alternate contact person to discuss patient care with Acelis Connected Health. If the customer is physically or mentally unable to sign, this document can be signed by a representative of the patient.

Alternate Contact Person

Relationship To Customer

Mailing Address

Same As Customer

Primary Phone Number

Insurance Name

Insurance Phone Number

Insurance Address

City

State

Zip

Insurance Policy Or Member Number

Insurance Effective Date

Insurance Group Number

Insurance Expiration Date

Acknowledgment of Benefit

Please Complete The Following Acknowledgment Of Benefits from Acelis Connected Health Customer Or Representative, Please Read And Initial The Following:

I acknowledge that Acelis Connected Health's Notice of Privacy Practices is available online at [Acelis.com](https://www.acelis.com) and a summary of our notice can be found in this brochure.

I authorize the release of any medical or other information necessary to verify benefits, process claims, or provide appropriate care or related services provided by Acelis Connected Health or its agents.

I authorize payment of medical benefits to Acelis Connected Health or its assignees on my behalf for products or services furnished to me. I accept full and complete financial responsibility for all medical services rendered to me and agree to any and all insurance co-payments, deductibles, and co-insurance that may be required under the terms of my medical insurance policies, as well as pay for any medical care that is considered a "non-covered" service under the terms of my medical insurance plan.

By signing below I acknowledge I have read and accept the statements listed above.

Patient Or Representative Signature:

Date

Print Name

Relationship

Fax Completed Form To 1.925.606.6978 Or Mail To: Acelis Connected Health • 6465 National Drive • Livermore, CA 94550

Questions? Call us at 1.800.916.4515. [Acelis.com](https://www.acelis.com)

CUSCF

© 2024 Acelis Connected Health. All rights reserved. All trademarks referenced are trademarks of their respective owners. Any photos displayed are for illustrative purposes only. Any person depicted in such photos is a model.

Discover the convenience of remote INR monitoring.

The Acelis Connected Health Remote INR Monitoring Program* enables you to test and report your INR at home, or wherever it's convenient for you. And it has the potential to offer the effectiveness and peace of mind that is valued by patients and clinicians alike. Remote INR monitoring has been associated with overall higher levels of quality of life and patient satisfaction when compared to Usual Care.¹ (INR testing performed in office or lab setting.)

What are the potential benefits of remote INR monitoring?

- o An analysis of patients on service with Acelis Connected Health found that ACH remote INR monitoring customers had a mean time in therapeutic range of 70%,² versus 63.5%³ for Point-of-Care testers.**
- o Studies support the association of greater time in therapeutic range (TTR) with a lower risk for adverse events and complications.⁴
- o And a separate meta-analysis of patient self-testing also found a **52% LOWER RATE** of any adverse event versus lab and POC.^{5†}

Self-Testing was associated with a 52% LOWER RATE of any adverse event versus lab and POC.

*Available in the U.S. only.

**Separate independent studies.

This is all it takes.

A qualified trainer from Acelis Connected Health can show you how to test yourself.

- 1. DRAW A SMALL DROP OF BLOOD** with a simple fingerstick
- 2. TEST YOUR BLOOD** using the INR meter we provide.
- 3. REPORT YOUR RESULTS** easily, using one of the following options:



Our ACH HealthCheck app for phones or tablets, which makes it easy to receive reminders and other messages from your doctor.



Online: **ACHHealthCheck.com**



Our self-service automated phone system: **1-855-209-8400**

Your doctor will be notified as soon as your results are reported.

It's covered by Medicare and private insurances.

Remote INR testing is a covered benefit for those with an accepted diagnosis by Medicare as well as private health insurance policies. Our benefit-verification team will determine your eligibility and copays. You provide your insurance company and ID number, and we take care of the rest.

We support you at every step.

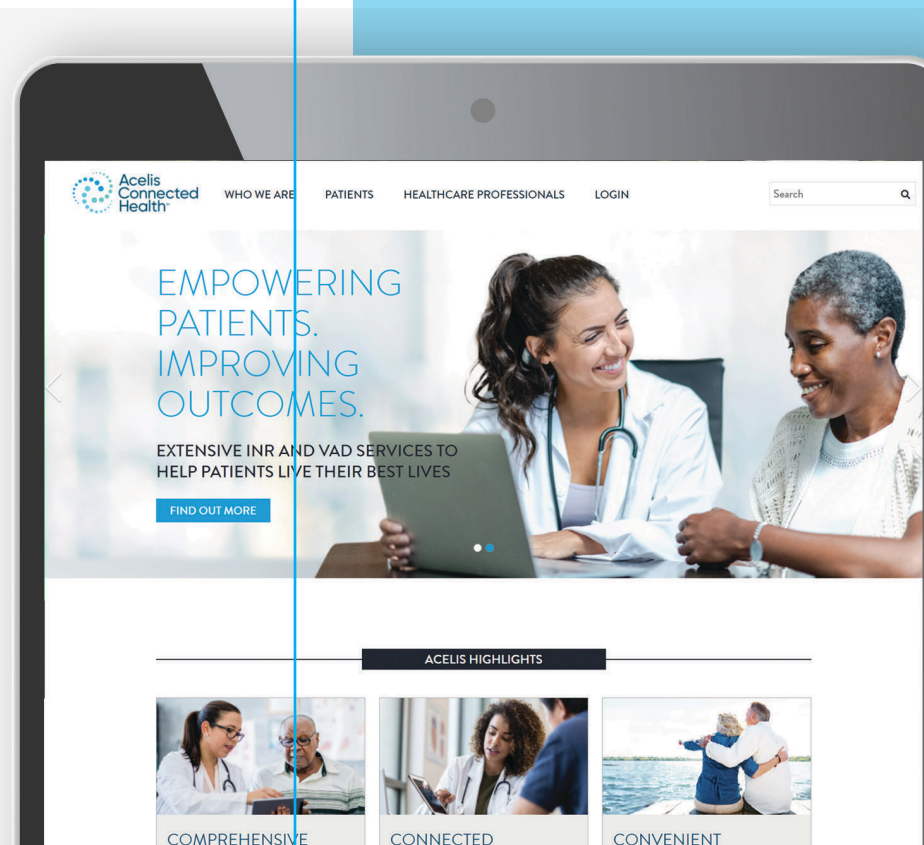
Our full-service program includes everything you need to get started and begin routine testing. We guide you through the enrollment process. Our personalized training ensures you or your caregiver are comfortable with the simple steps for testing and reporting your results. We also make it easy to reorder supplies based on your adherence to your prescribed testing frequency. And our customer service representatives are always ready to help with testing or your insurance coverage questions.

It's easy to get started.

Ask your doctor about remote INR monitoring, and whether it's right for you. If it is, your healthcare provider can send a completed prescription form to our patient enrollment team. Or, you can call us at **1-877-262-4669**, and we'll work with your doctor to obtain the proper forms and information.

Find out more on our website.

Want additional details on how remote INR monitoring can offer you greater convenience, easier reporting, and INR control? Check out **Acelis.com**. There you'll find a wealth of information for people who are taking warfarin. All presented in a way that makes it fast and simple to find what you're looking for.



Frequently Asked Questions

Q: What is remote INR monitoring?

A: Since warfarin helps prevent blood from clotting, it is essential to monitor its effectiveness. The measure that matters is your INR (International Normalized Ratio) level. Traditionally this came from a venous draw by a lab or your healthcare provider. Our remote INR monitoring service, as prescribed by your physician, enables you to report your INR results remotely without having to travel to a lab or a doctor's office.

Q: Is remote INR monitoring right for me?

A: If you expect to be taking warfarin long-term (for one year or more), you'll value the convenience of testing at home, or on the road when you're traveling.*** If you or a caregiver can follow a doctor's orders and prescription instructions, you're most likely well-suited for remote INR monitoring.

Q: How is my doctor involved?

A: Your doctor prescribes our service and is notified after you test to ensure your INR remains stable in between office visits. We report your test results to your healthcare provider according to your physician's instructions.

Q: How much training does it take?

A: We will help get you started with a personal training session. One of our qualified trainers will instruct you on how to obtain a blood sample with a simple fingerstick, use the INR meter and report your results.

In addition to our training team, our customer support representatives are available to help answer any questions that you may have.

***Upon the approval of your healthcare provider.

Notice of Privacy Practices

EFFECTIVE APRIL 1, 2020

THIS NOTICE DESCRIBES HOW MEDICAL INFORMATION ABOUT YOU MAY BE USED AND DISCLOSED AND HOW YOU CAN GET ACCESS TO THIS INFORMATION. PLEASE REVIEW IT CAREFULLY.

As required by the Health Insurance Portability and Accountability Act (HIPAA), Alere Home Monitoring, Inc. dba Acelis Connected Health Services (ACH, we, us or our) is providing you with this Notice of Privacy Practices (Notice) describing (1) the uses and disclosures of health information that may be made by ACH; (2) your rights under HIPAA; and (3) ACH's legal obligations with respect to your health information. Health information includes individually-identifiable medical, insurance, demographic and medical payment information, such as information about your diagnosis, medications, insurance status, medical claims history and policy information. ACH is committed to protecting the privacy and confidentiality of your health information.

Although you will receive a full copy of of this Notice of Privacy Practices at time of training, you may request a full copy at any time by calling Acelis Connected Health at **1.877.262.4669** or you may view it at **Acelis.com**.